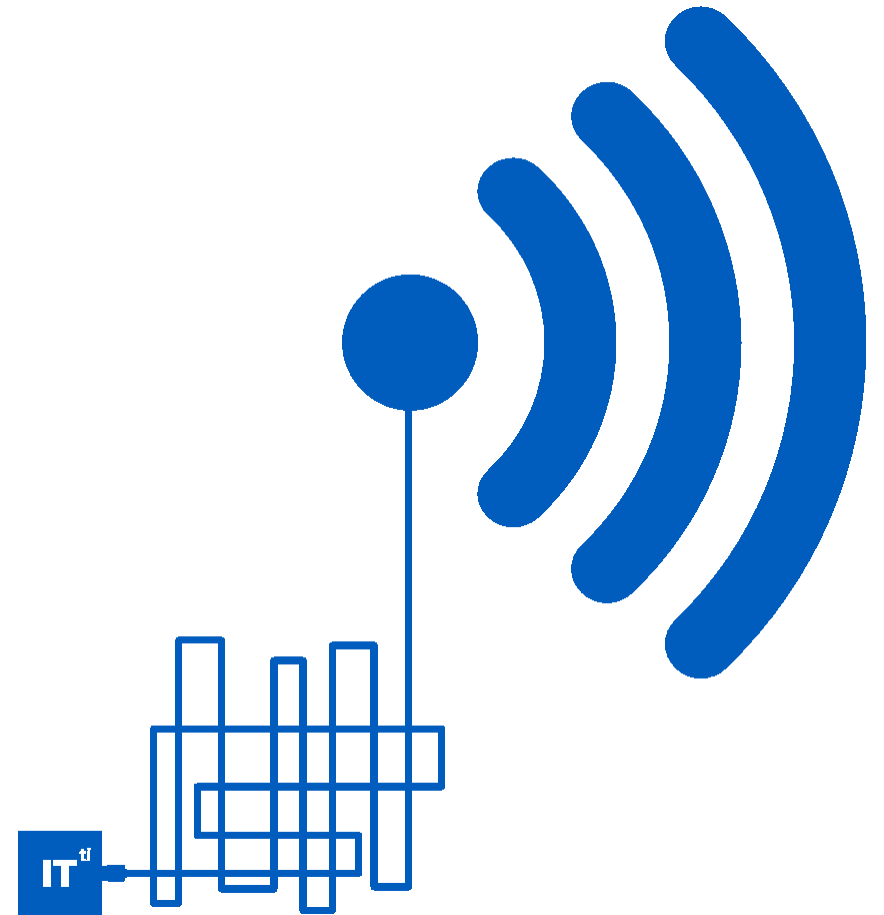


# Wifi Site Survey

Vedran Franjić  
Sistemski inženjer, Integra Group d.o.o.

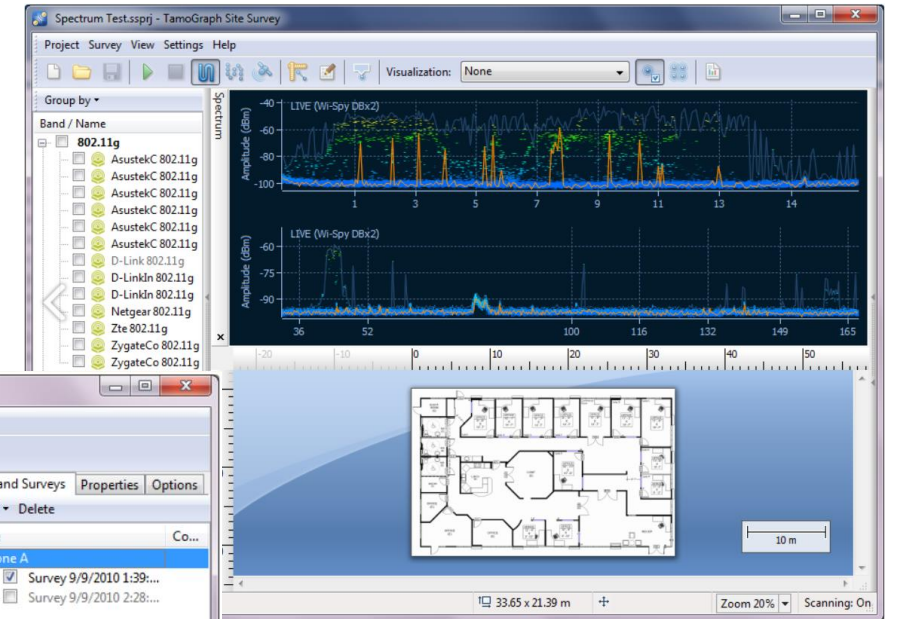
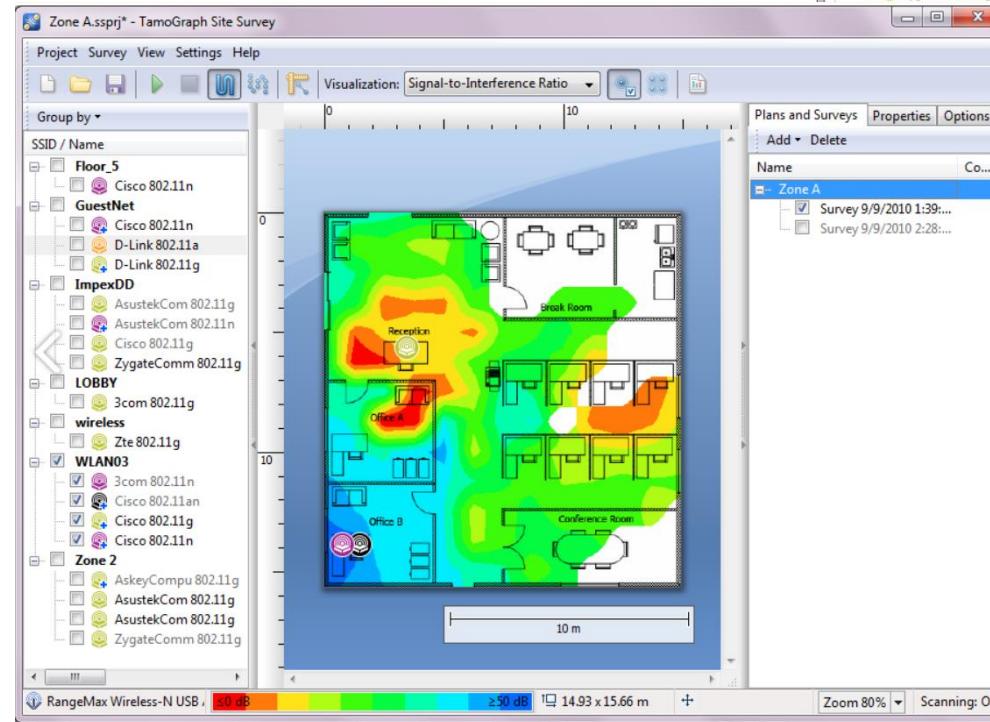


14. DAN INTEGRACIJE

**UVIJEK POVEZANI**

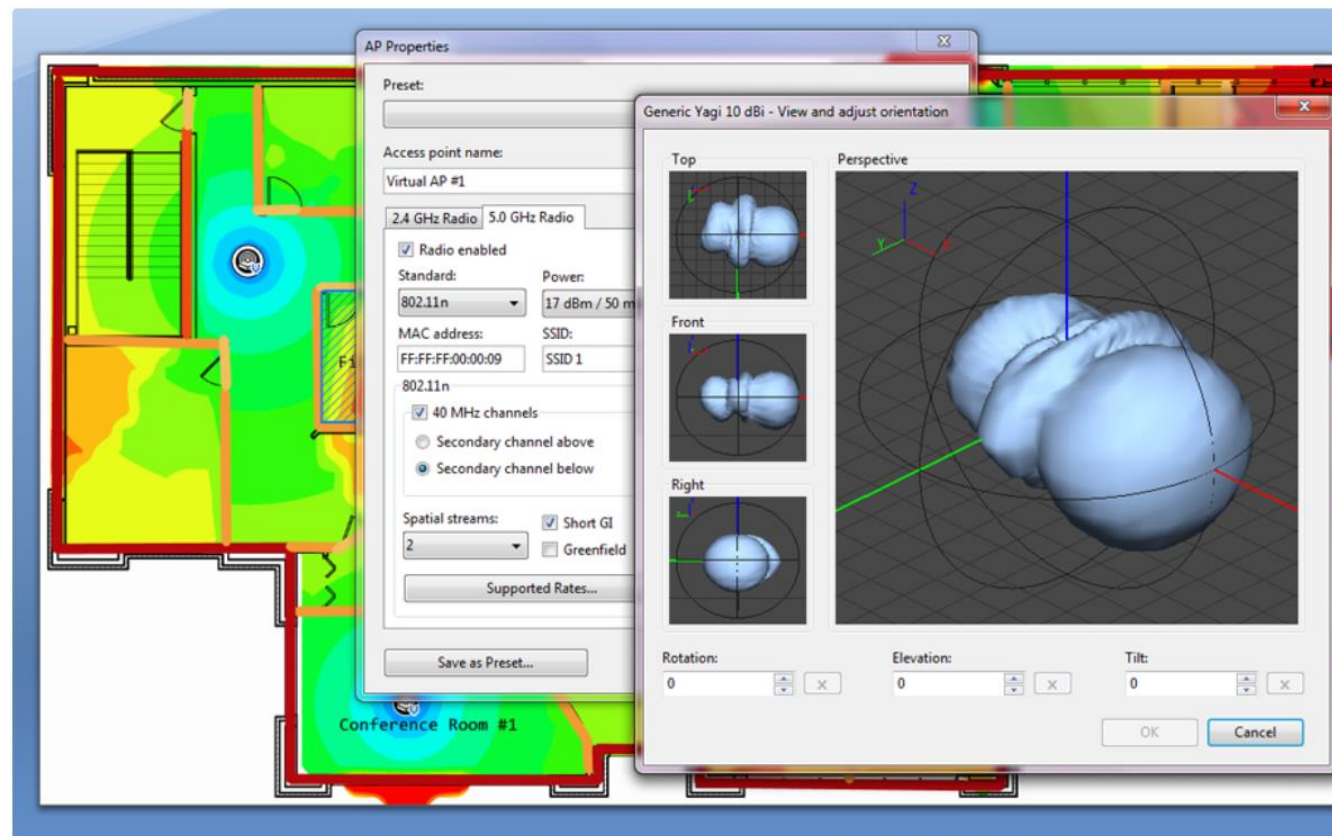
# Wifi Site Survey

- Predictive
- Passive
- Active
- Post

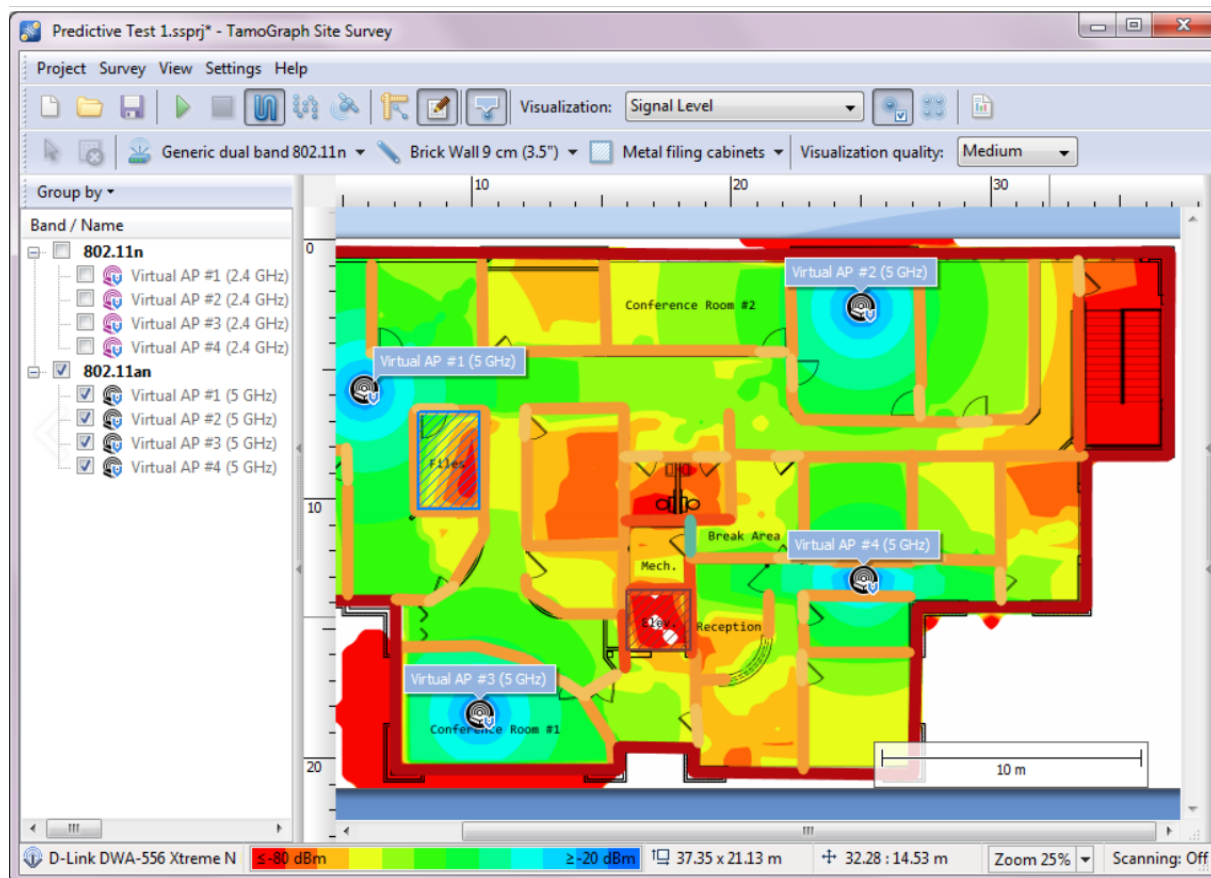


# Predictive

- Planiranje broja AP-ova, smještaja, antena
- Bez odlaska na lokaciju
- Potrebno pripremiti tlocrte
- Potrebno poznavati materijale koji se koriste na lokaciji



# Passive



- Analiza bez spajanja na AP
- Skeniraju se svi kanali
- Generira se i analizira veći broj izvještaja (SNR, Signal strength, interference, channel allocation, data rates, AP characteristics i sl.)



# Active

- spajanje na Wifi mrežu i generiranje prometa
- Skenira se jedna WiFi mreža
- TCP down/upstream rate
- UDP down/upstream rate
- UDP data loss
- Round-trip-time

Active Survey Settings

Wi-Fi adapter for the passive part of the survey  
ORiNOCO 802.11n USB

Wi-Fi adapter for the active part of the survey  
Intel(R) Wireless WiFi Link 4965AGN

Connection mode

Any AP with the following SSID:  
DU24EXT0

A single AP with the following MAC address:  
00:19:77:FC:FC:60 (Aerohive), SSID = HIVE005

Active survey type  
Advanced (using a throughput test utility)

IP address of the computer on the wired side of your network where you launched the Throughput Test Server application: 192.168.0.1 Port: 27100

QoS traffic type: Best Effort Protocol: TCP + UDP

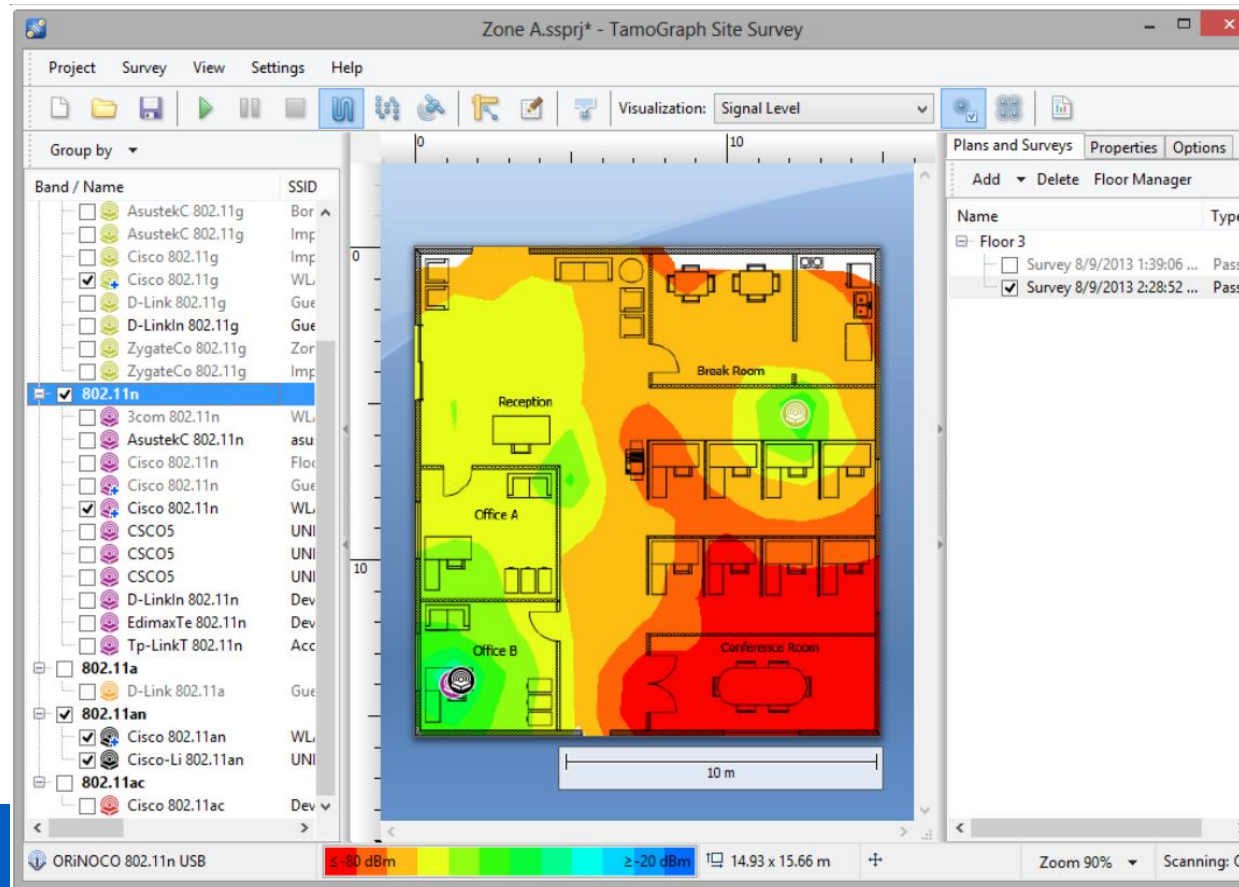
*i* Before you conduct a survey, make sure that a valid network profile exists for the selected network in Windows. Press F1 for more details.

Cancel Verify and Start



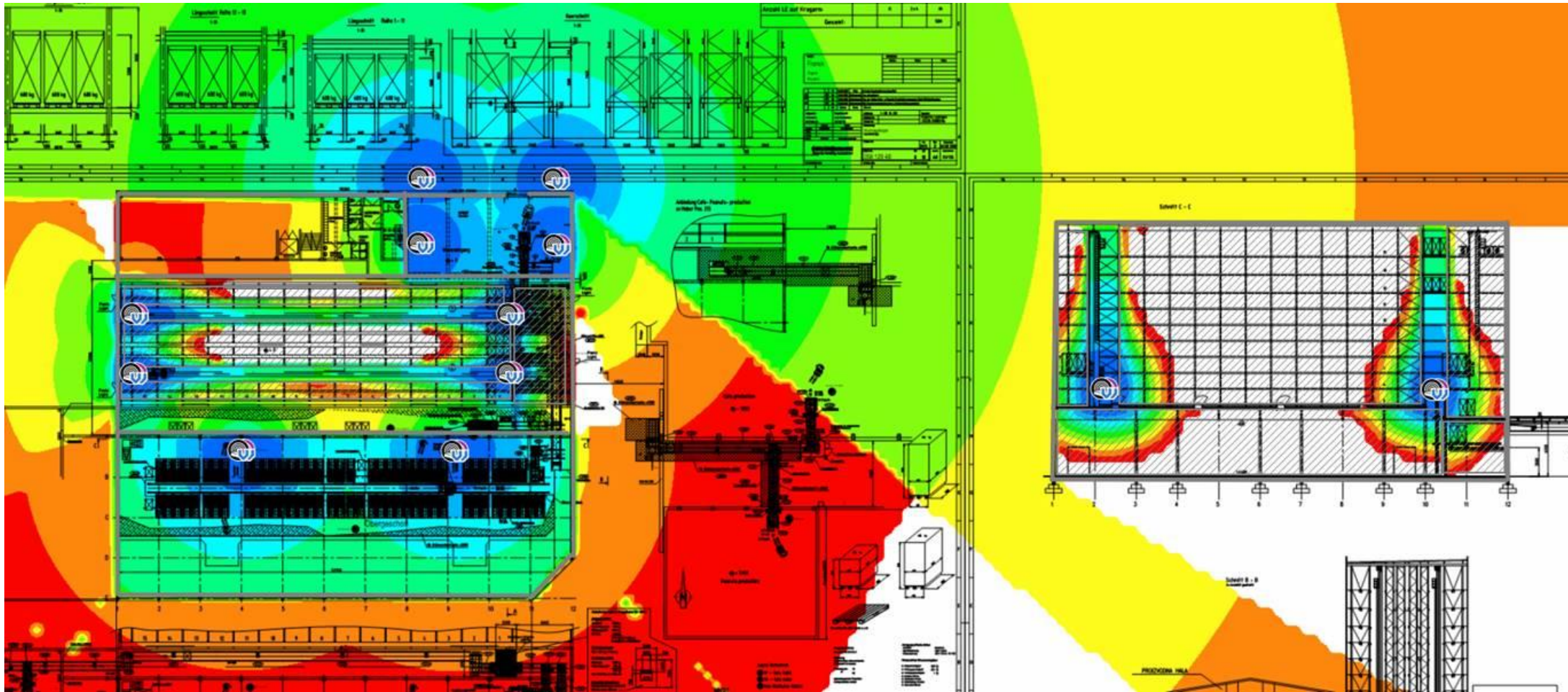
# Post

- Post implementacijsko skeniranje da bi se uvjerali da sve radi kako očekujemo



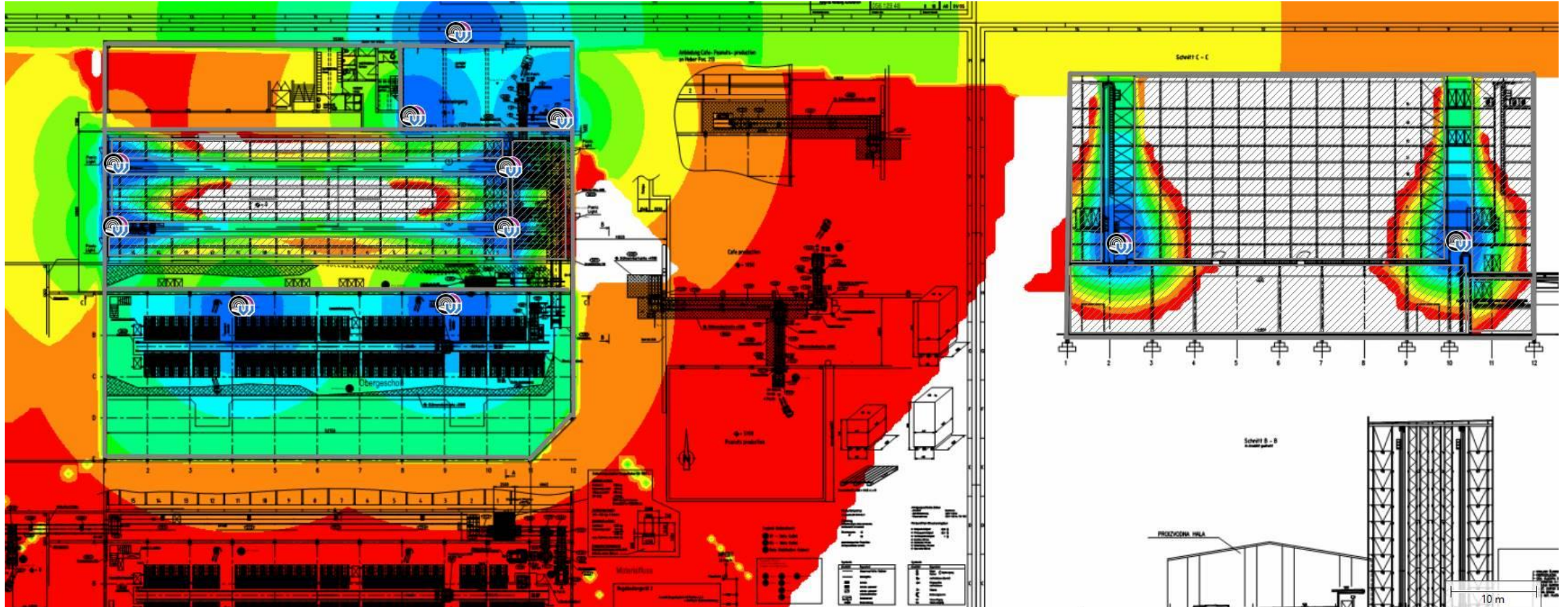


# Primjeri



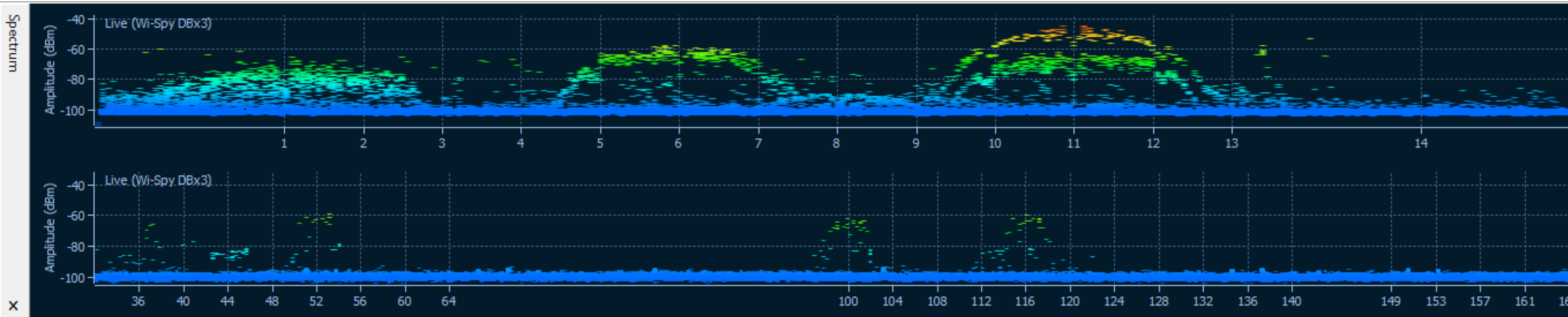


# Primjeri





# Primjeri



# Primjeri

- Demo – Passive i Active survey



integra<sup>e</sup>group

[www.integrargroup.hr](http://www.integrargroup.hr)

14. DAN INTEGRACIJE

**UVIJEK POVEZANI**

